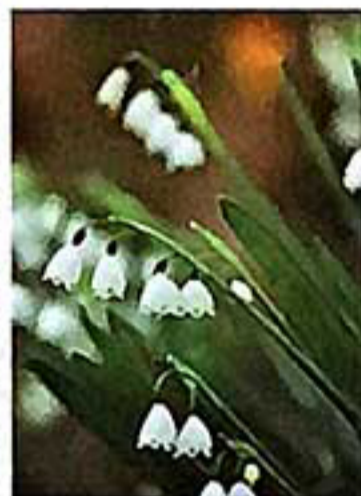




*below:* The 7-acre Mynelle Gardens, just a few minutes off the interstate, showcases a variety of blooms that herald a season of bright color.



PHOTOGRAPHS: BLAKE SIMS

Swathes of flowers at this hidden spot provide guests of all ages with great memories.

## Petal Pleasures

Witness the signs of spring at the oasis called Mynelle Gardens.

Minutes away from downtown Jackson, Mississippi, hides a spot that is sure to put a spring in your step. Almost completely concealed by an iron fence and visitors entrance, Mynelle Gardens goes largely unnoticed by passersby. That's what makes it special. Plus, with its close proximity to I-220, accessibility is a cinch.

### Discover Nature in the City

An urban community bustles around this small but thriving space. Moss-colored grass carpets the garden floor, as do white pansies and lemon-yellow daffodils with cream and orange centers. Gorgeous saucer magnolias are show-stealers too.

Bronze figures of children at play and a pond filled with fish and turtles embellish the tranquil setting. An Asian-inspired bridge adds an element

of Zen to the landscape. Its serene atmosphere once provided a relaxation spot for World War II veterans from a nearby hospital. Back then the property belonged to Mynelle Green, who offered her home to the war-burdened soldiers. The City of Jackson acquired the estate in 1973.

The love of Jackson's gardening community has kept this peaceful place alive. Like a seasonal rite of passage, in-the-know guests flock to the simple garden for fresh air. A gentle breeze and the lovely sounds of birdsong make the moments even more magical.

It's one of spring's sweetest wonders.

—FARRAH AUSTIN

**Mynelle Gardens:** 4736 Clinton Blvd., Jackson, MS 39209; [www.city.jackson.ms.us/visitors/mynelle.htm](http://www.city.jackson.ms.us/visitors/mynelle.htm) or (601) 960-1894. ♦

### More Magnolia State Gardens

• **Rosalie Mansion in Natchez, Mississippi:** 100 Orleans Street; [www.rosaliemansion.com](http://www.rosaliemansion.com).

**Admission:** \$8 adults, \$4 ages 6-17. (About two hours from Jackson.)

• **Crosby Arboretum in Picayune, Mississippi:** 370 Ridge Road; [www.crosbyarboretum.msstate.edu](http://www.crosbyarboretum.msstate.edu) or (601) 799-2311.

**Admission:** \$4 adults, \$2 ages 12 and under. (About three hours from Jackson.)